



Support. Education. Local Events.
for Adoptive Families



In this Issue:

Introduction

Services Available

NEW!

Did You Know?

Events, Training,
and Family Activities

Photo Reflections
from 2016

Websites

Bethany Locations
& Counties Served

The PARC newsletter is published quarterly. Please direct questions and comments to parcnewsletter@bethany.org

Bethany Christian Services is a nonprofit, private social services agency with more than 115 offices located in 36 states. In addition, Bethany offers social services to children and families in 15 countries.



www.bethany.org

This program is funded in part by the Michigan Department of Health and Human Services.

© 2017 Bethany Christian Services MI-900-NWL-17430

Happy Endings and New Beginnings

We're not sure how it happened, but 2017 is almost in the books. As this year ends and another year begins, it's easy to get so busy that we never stop and ponder, "What are we really doing anyway?" It's something that we at the Post Adoption Resource Center think about often as we strive to do our best to strengthen and support our adoptive families. The New Year is a great time for reflection, reviewing, and finding ways to resource the things that really matter.

In this issue, we'll spend some time reflecting on the awesome experiences of 2017 and invite you to join us as we reminisce over a few of the ways we've been fortunate to serve our families throughout the year.

We'll also take this opportunity to review with you many of the different ways that the Post Adoption Resource Center supports adoptive families. We still meet people from time to time who ask the question, "What is it that you do again?" so we want to make sure you know some of the things that are available to your family. We've included a few examples, too! Keep in mind that our services are free for all families in our regions who have adopted, regardless of their adopting agency. We hope that will make 2018 a little bit brighter!

Finally, we think family is something that really matters, so as you begin to organize and prepare for the new year, we've included a few tidbits that might help you, as an adoptive family, find the resources you need along the way.

So, grab a warm cup of your favorite winter drink, curl up in your chair, and join us as we look back at this past year with fond memories and look forward to the hope of new things and new happiness ahead.

What does the Post Adoption Resource Center do?



The Post Adoption Resource Center serves adoptive families residing throughout the state of Michigan. These families can receive free services and support such as:

CASE MANAGEMENT

Adoptive families who are in need of support may refer themselves for crisis case management services. A Post Adoption Case Manager will meet with the family in their home to assess current struggles, history, and resources to strengthen their family functioning. Case managers will meet at least 1-2 times per week with the family for 6-8 weeks to support them as they work towards their goals. Some goals may include trauma-informed parenting support, behavioral strategies, safety planning, life-skill activities for teenagers transitioning into adulthood, and many more.

COORDINATION OF COMMUNITY SERVICES

Adoptive families may request information and referrals to help them access local community services. A Post Adoption Specialist can assist and advocate for the family to help them connect with services such as special education, medical subsidy, Medicaid, and Community Mental Health services. Post Adoption Specialists often assist families in applying for medical subsidy benefits such as tutoring and summer camps. Additionally, a Post Adoption Specialist can join a wraparound team with other service providers of the family, or assist parents of internationally adopted children in applying for their child's United States citizenship.



COMMUNICATION AND ACCESS TO INFORMATION

A member of the Post Adoption team will support and assist families in seeking adoption-related information and connect them with appropriate community resources. Post Adoption team members often assist families in researching local therapists, contact information for adoption assistance, and information on who to contact for access to adoption records. Each office also has a free lending library with many books, games, and DVDs, as well as a Facebook page with relevant articles, resources and events.

ADOPTIVE FAMILY SUPPORT

The Post Adoption Resource Center is committed to linking adoptive families together through our monthly group events held throughout the state as well as trainings that take place on a quarterly basis. These trainings may occur at local support groups, in the evening with guest speakers, and at lunch and learns at our office. Additionally, the Post Adoption Resource Center hosts a conference and/or weekend retreat at least once a year.

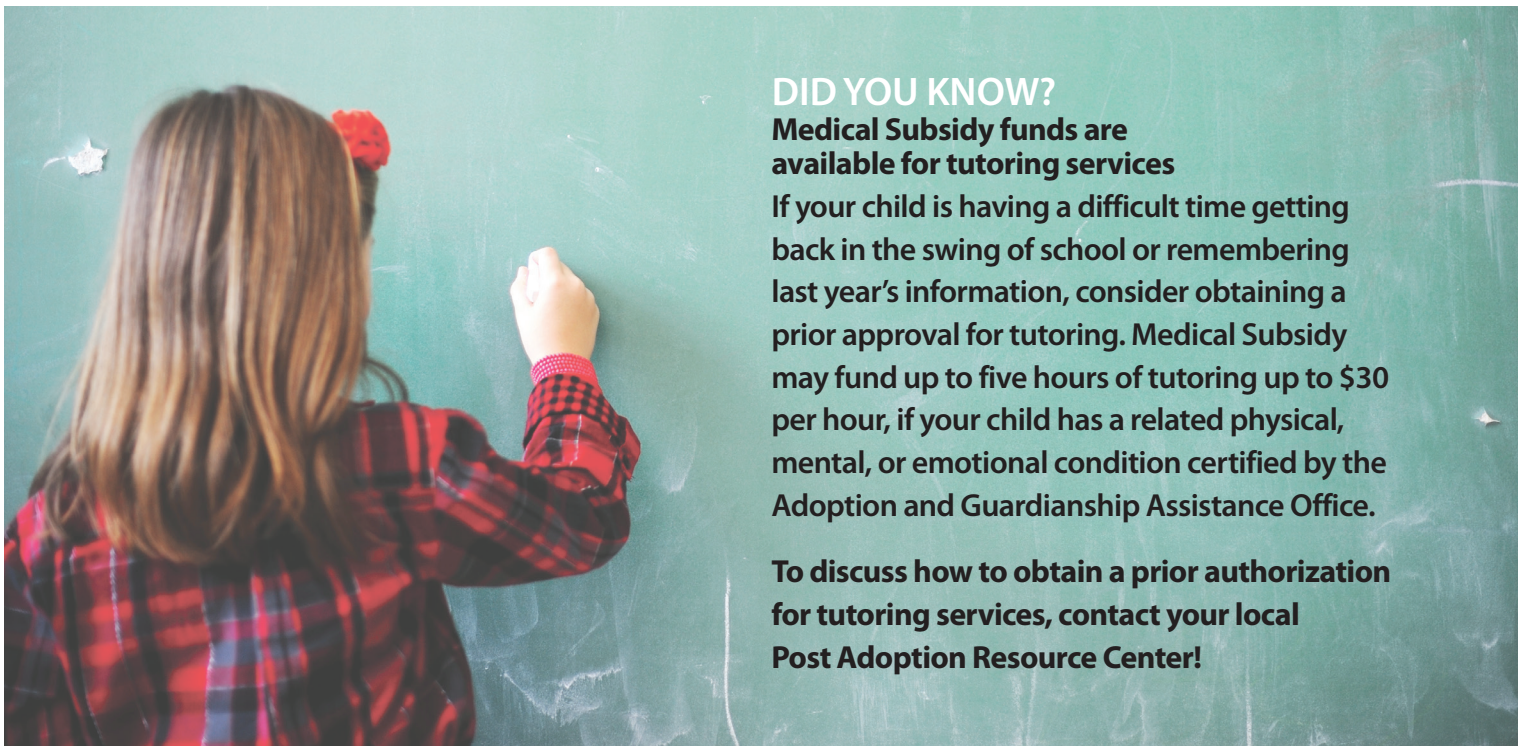
Helpful Tidbits for the Year Ahead • Did You Know...

DID YOU KNOW?

Adoption and Guardianship Assistance Office Information

You can find the Adoption and Guardianship Assistance Payment Schedule online by searching:

“Michigan Adoption Assistance Payments”



DID YOU KNOW?

Medical Subsidy funds are available for tutoring services

If your child is having a difficult time getting back in the swing of school or remembering last year's information, consider obtaining a prior approval for tutoring. Medical Subsidy may fund up to five hours of tutoring up to \$30 per hour, if your child has a related physical, mental, or emotional condition certified by the Adoption and Guardianship Assistance Office.

To discuss how to obtain a prior authorization for tutoring services, contact your local Post Adoption Resource Center!

DID YOU KNOW?

Adoption Records Information

To obtain information from a closed adoption record, you must first determine if the adoption was through Michigan's Child Welfare system. If so, begin your search for information through the Michigan Department of Health and Human Services, Central Adoption Registry. Adult adoptees must make their request for information in writing, using the DHS-1925 form and a copy of photo identification. This information should then be sent to:

**Michigan Department of Health and Human Services
Central Adoption Registry,
235 S Grand Ave, Ste 514,
PO Box 30037,
Lansing, MI 48909**



If the adoption was a private, direct consent, or step-parent adoption, you would contact the court where the adoption was finalized. The court will either fulfill the request or refer you to the agency that facilitated the adoption.

Quotes to Inspire You

“If you want to go fast, go alone. If you want to go far, go together.”—African Proverb

local events & training & family activities

All three Post-Adoption Resource Centers have many family fun events planned for winter, as well as support groups and trainings. Please check your Post Adoption Resource Center region's Facebook page, watch for monthly calendars, or give us a call to find out what is available near you.

REGION 2:
Northern Michigan
231-421-6500
parctc@bethany.org

www.facebook.com/PostAdoptionResourceCenterOfNorthernMI

REGION 3:
Central Michigan
231-924-3390

www.facebook.com/PostAdoptionResourceCenterCentralMichigan

REGION 4:
Western Michigan
616-224-7565
parcgr@bethany.org

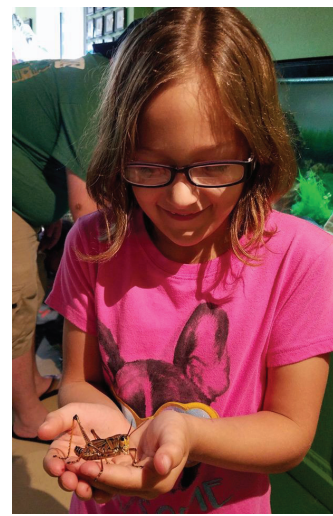
www.facebook.com/PARCRegion4

Reflections of an incredible year at the Post Adoption Resource Center



34 parents and 64 children enjoyed a fun-tastic night of riveting Traverse City Beach Bums baseball with the Traverse City Post Adoption Resource Center!

Two of our Post-Adoption teens provide a fun landing spot for some of the creatures at the Grand Traverse Butterfly House and Bug Zoo! 13 adults and 19 children enjoyed this unique event.



This happy family of six enjoyed the Free Films in Fremont and some yummy movie snacks with the Fremont Post Adoption Resource Center!

For upcoming events, trainings, and conferences, keep an eye out for your local PARC event calendars in the mail and on Facebook!



Bethany Christian Services is committed to supporting adoptive families through the lifelong, rewarding journey of adoption.

REGION 2
 Bethany Christian Services
 1055 Carriage Hill Dr, Ste 2
 Traverse City, MI 49686
 231-995-0870
www.bethany.org/traversecity

Charlevoix, Emmett, Cheboygan, Presque Isle, Antrim, Otsego, Montmorency, Alpena, Leelanau, Benzie, Grand Traverse, Kalkaska, Crawford, Oscoda, Alcona, Manistee, Wexford, Missaukee, Roscommon, Ogemaw, and Iosco counties

REGION 3
 Bethany Christian Services
 6995 West 48th St
 Fremont, MI 49412
 231-924-3390
www.bethany.org/fremont

Mason, Lake, Osceola, Clare, Gladwin, Arenac, Oceana, Newaygo, Mecosta, Isabella, Midland, Bay, Montcalm, Gratiot, Saginaw, Ionia, Clinton, and Shiawassee counties

REGION 4
 Bethany Christian Services
 901 Eastern Ave NE
 Grand Rapids, MI 49503
 616-224-7565
www.bethany.org/grandrapids

Allegan, Berrien, Cass, Kent, Muskegon, Ottawa, and Van Buren counties



postadoptionrc.org

other suggested websites: www.adoptivefamilies.com www.adoptioninstitute.org